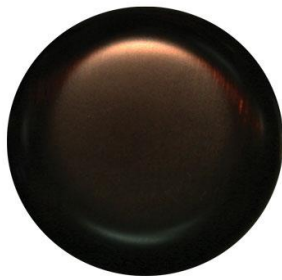


Dixline PVD Standard Colors



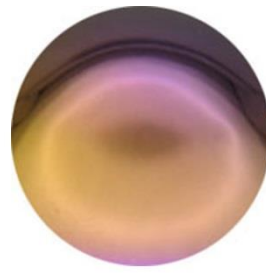
**PVD
Black**



**PVD
Bronze Venetian**



**PVD
Copper-Bronze Bright**



**PVD
Color Mix**



**PVD
Color Blue**



**PVD
Copper Bright**



**PVD
Copper Star**



**PVD
Copper Antique**



**PVD
Brass Bright**



**PVD
Brass Pearl**



**PVD
Gold Bright**



**PVD
Gold Antique**



**PVD
Gold Pearl**



**PVD
Gold-Old Bright**



**PVD
Gold-Old Pearl**



**PVD
Chrome Bright**



**PVD
Chrome Pearl**



**PVD
Nickel Bright**



**PVD
Nickel Pearl**



**PVD
Silver Bright**



**PVD
Stainless Steel**



**PVD
Stainless Steel Pearl**

**Virtually any PVD
color is available**

**Design your own
exclusive color**

Dixline Electroplated Standard Colors



EP
Bronze Scotia
Brushed



EP
Bronze Venetian
Brushed



EP
Bronze Brushed



EP
Bronze Antique
Brushed



EP
Nickel Cedar
Brushed



EP
Nickel Bronzestone
Brushed



EP
Copper Antique
Brushed



EP
Gold Antique
Brushed



EP
Gold Brushed



EP
Gold Tiffany
Brushed



EP
Nickel Antique



EP
Nickel Brushed



EP
Silver Brushed



EP
Bronze Oil Rubbed

Antiqued sheen

Electroplating w/antique coating and buffed to create highlights

Others (Dixline Unique)

DURO sheen, another name for antiquing
Venetian, a darker version of base color
Bronzestone, multicolor copper/nickel brushing technique
Scotia, a unique brushing technique
Tiffany, white antique technique