

Dixline Color Sheet

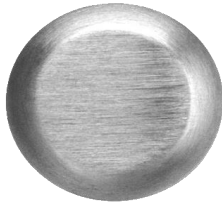
CHROME



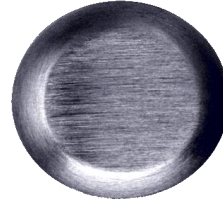
Bright/Polished(US26)



Satin (US26D)



Brushed(US26D)



Antique

NICKEL



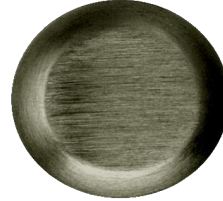
Bright/Polished(US14)



Satin(US15)



Brushed(US15)



Antique(US15A)

BRASS



Bright/Polished(US3)

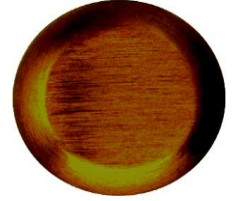


Satin(US4)

Note: Product appearance may differ from this chart as a result of the differences in plated versus printed materials.



Antique(US7)



Antique-Dark(US5)

BRONZE



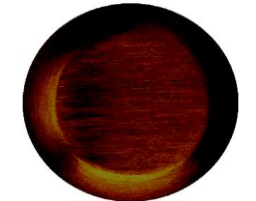
Bright



Satin(US10)



Antique(US10A)

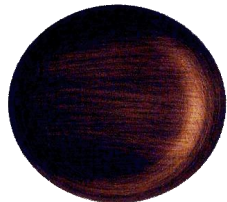


Antique-Dark(US11)

BRONZE



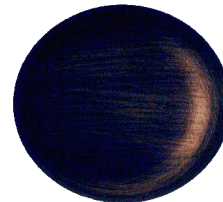
Oil Rubbed(US10A/B)



Oil Rubbed(US10A/B)
Highlight Relieved



Venetian



Scotia

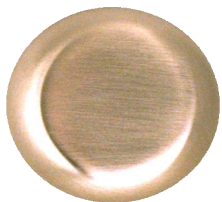
SPECIALTY



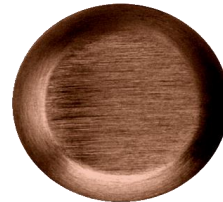
Western
Pewter



Tiffany
Gold



Nickel
Bronzestone



Cedar
Nickel



Dura
Gold